

STRUCTURAL INSULATED ROOF
PANELS (SIP's)

OPERABLE CLERESTORY WINDOWS
TO MAXIMIZE DAYLIGHTING

HIGH PERFORMANCE BUILDING
ENVELOPE UTILIZING "DENSE-PACK"
CELLULOSE INSULATION AND
STAGGERED STUD WOOD FRAMING

DEEP EAVES FOR SUN SHADING

CAREFULLY SIZED WINDOWS
WITH LOW-E ARGON FILLED
INSULATED GLAZING

ROOM OCCUPANCY SENSORS
FOR LIGHTING

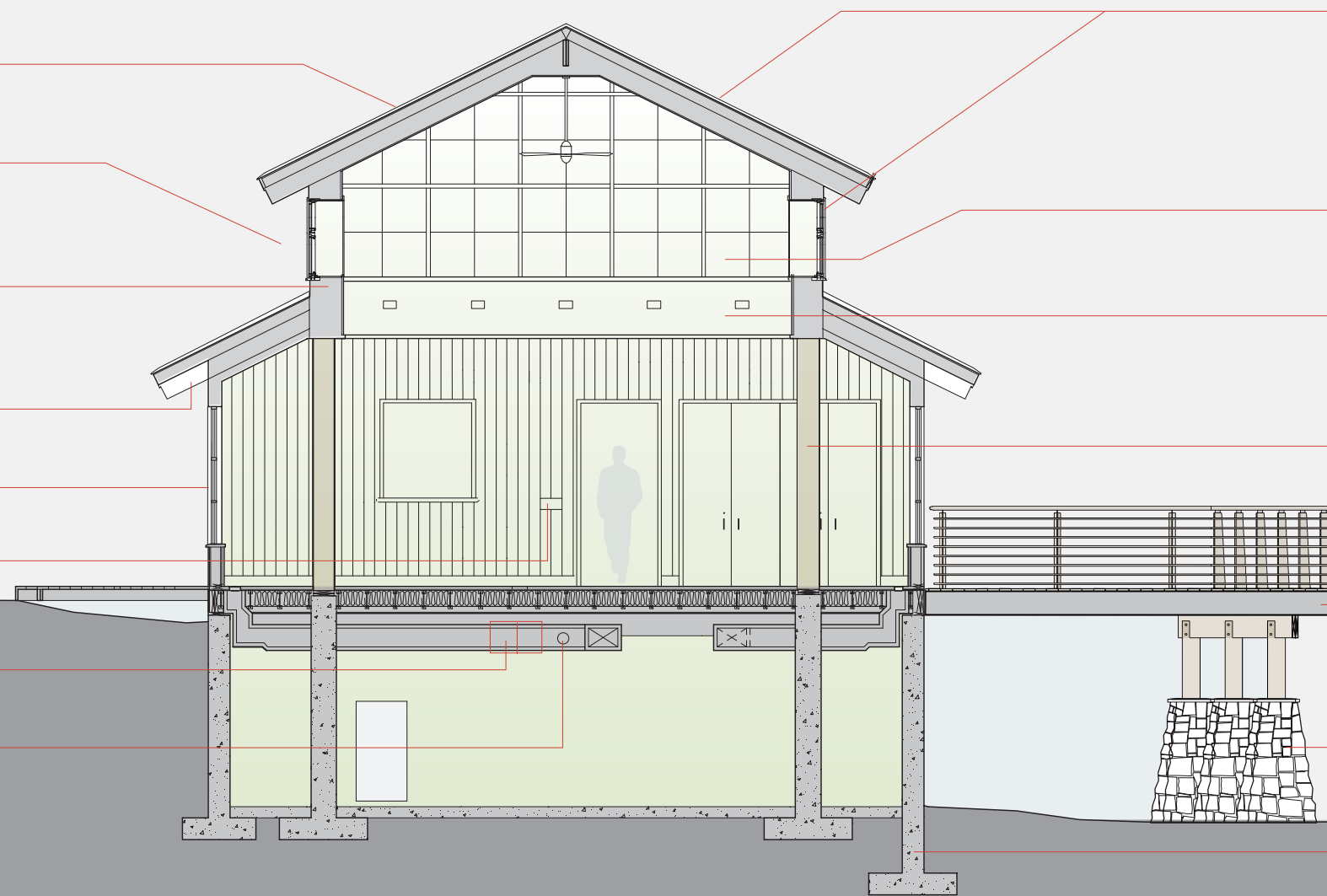
AIR TO AIR HEAT EXCHANGERS

CO2 MONITORS FOR HVAC SYSTEM

GEOTHERMAL HEAT PUMP
SYSTEM FOR HEATING AND COOLING

USE OF COMPOSTING TOILETS
TO MINIMIZE WATER USE

HIGH EFFICIENCY PUMPS AND FANS



OPERABLE SKYLIGHTS AT DORM
WINGS AND CLERESTORY WINDOWS
AND CEILING FANS FOR NATURAL
VENTILATION

SOUTHERN EXPOSURE ALONG
SOUTH SIDE OF BUILDING FOR
PASSIVE SOLAR HEAT GAIN

USE OF RECYCLED MATERIALS
IN FLOORING, CARPETING AND
ACOUSTIC PANELS

LOW VOC (VOLATILE ORGANIC
COMPOUNDS) BUILDING MATERIALS
INCLUDING PAINTS AND FLOOR
COVERINGS

SALVAGED BLACK ROCK FOREST
TREES USED FOR STRUCTURAL
COLUMNS AND WALL PANELING

ACQ LUMBER (ARSENIC FREE WOOD)
FOR EXTERIOR WOOD FRAMING

USE OF STONE FROM BLACK
ROCK FOREST FOR STONE
BASE AND PIERS

RECYCLED FLY ASH IN CONCRETE



FOREST LODGE Green Building Section

©2007 FXFOWLE ARCHITECTS, PC | ALL RIGHTS RESERVED | 22 WEST 19 STREET | NEW YORK, NY 10011 | T 212.627.1700 | WWW.FXFOWLE.COM

FXFOWLE